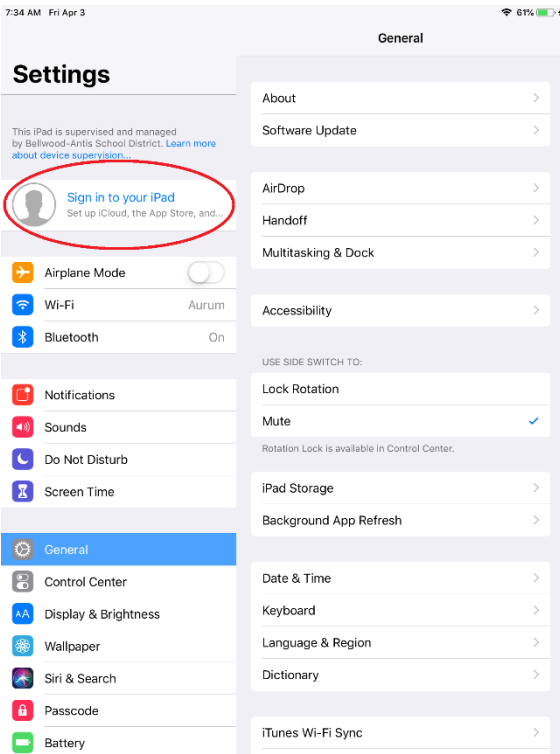
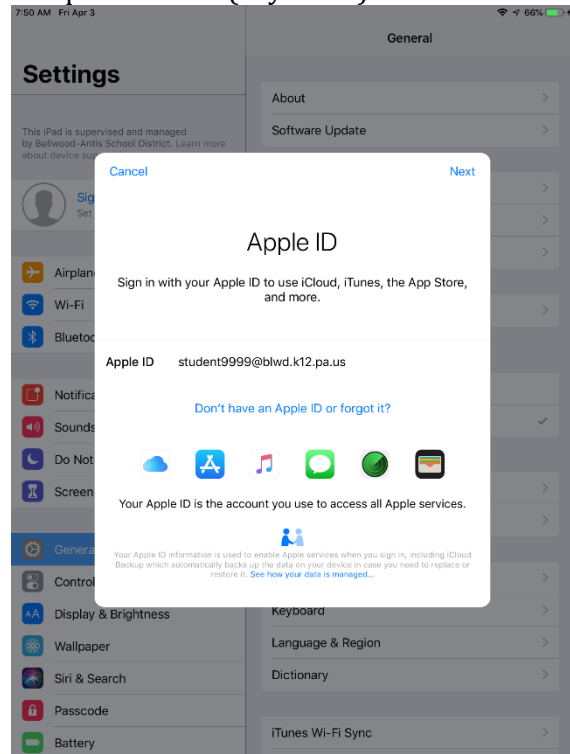


Signing into your Apple ID on an iPad.

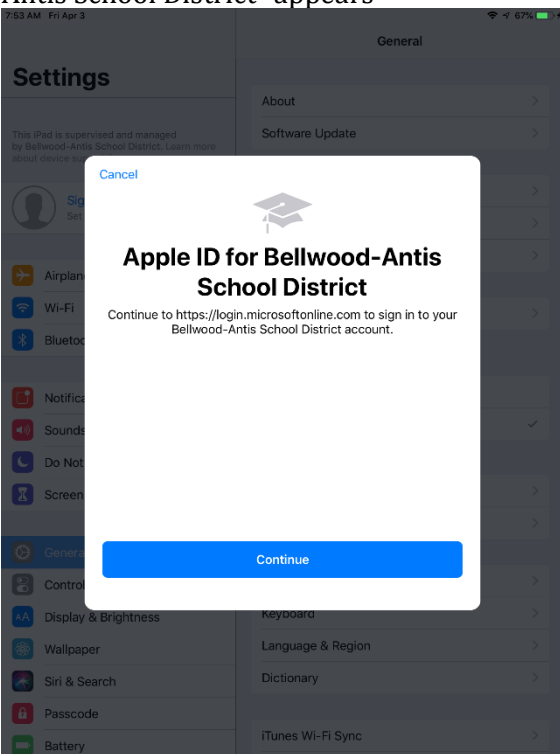
Navigate to Settings > “Sign in to your iPad”



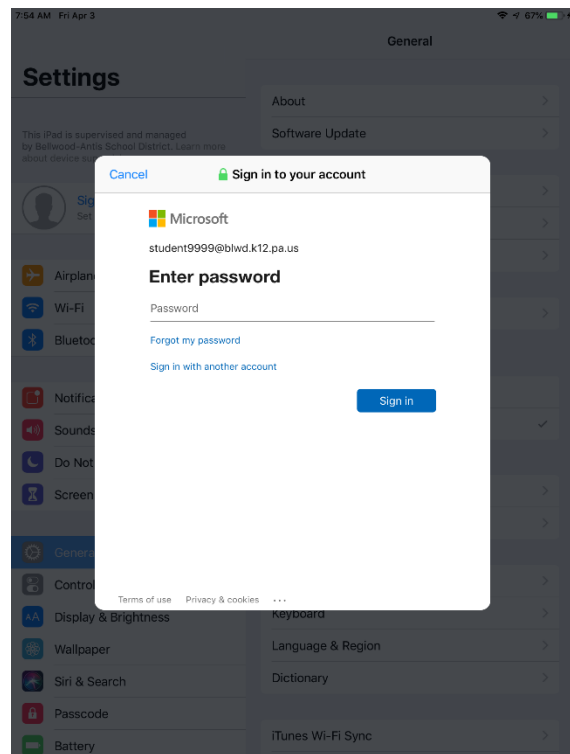
Enter your Bellwood SSO credentials (Single Sign On/@blwd.k12.pa.us email) and press return (keyboard) or next to continue



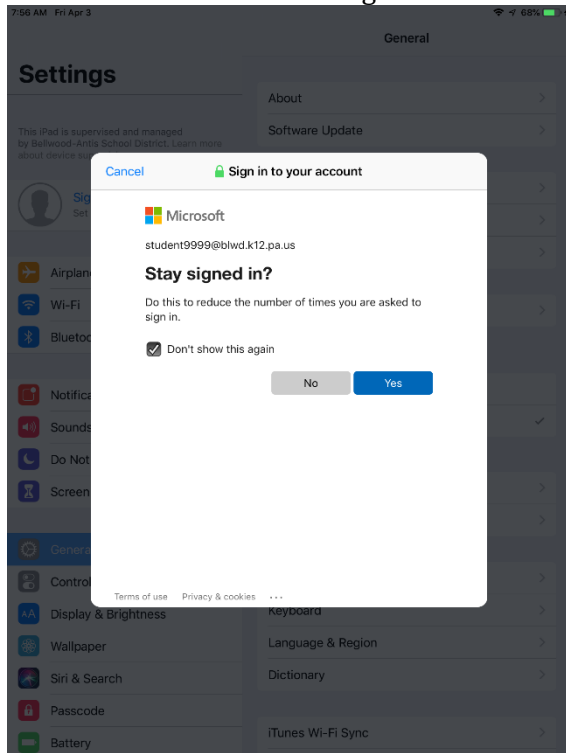
Select Continue when “Apple ID for Bellwood-Antis School District” appears



Enter your SSO password (88 number)



Select the “Don’t show this again” checkbox and press yes to continue



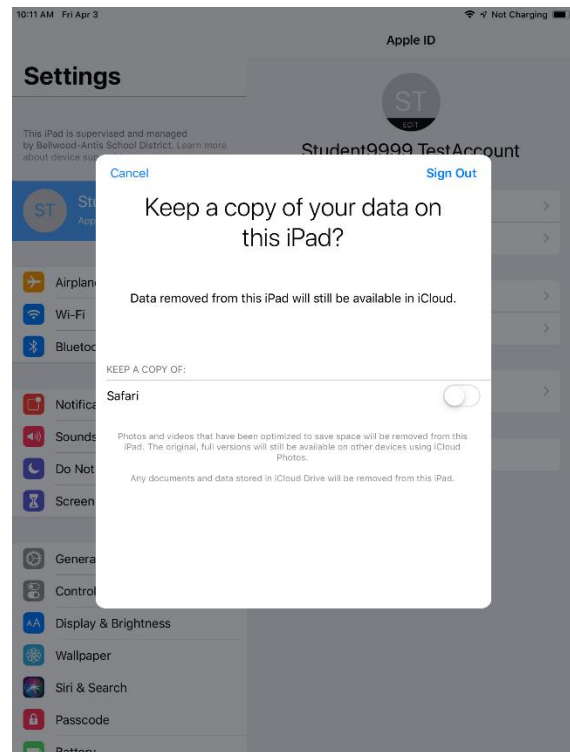
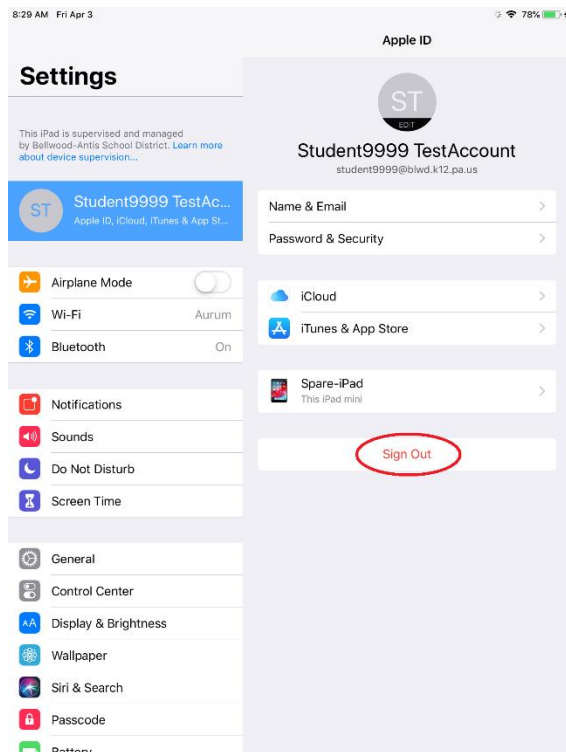
Signing out of your Apple ID on an iPad.

If your iPad is replaced, you may sometimes see an old device still listed in your Apple ID.

***To remove your Apple ID from the device:**

Navigate to Settings > Apple ID > Sign Out

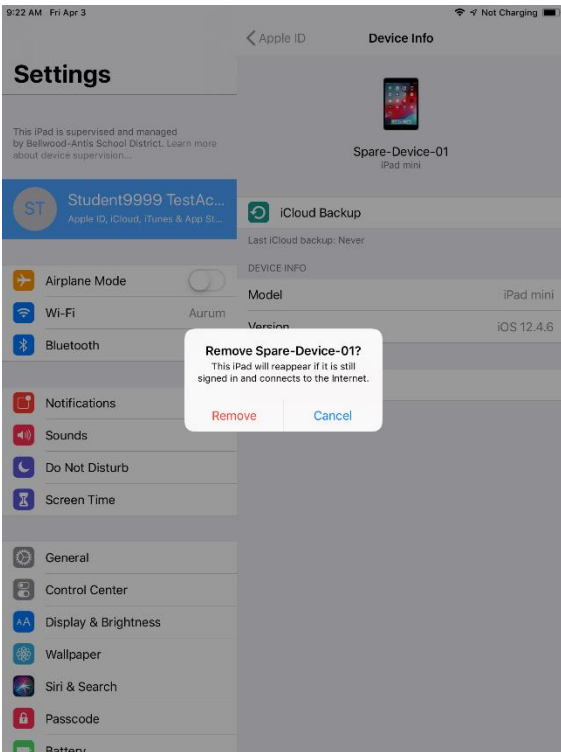
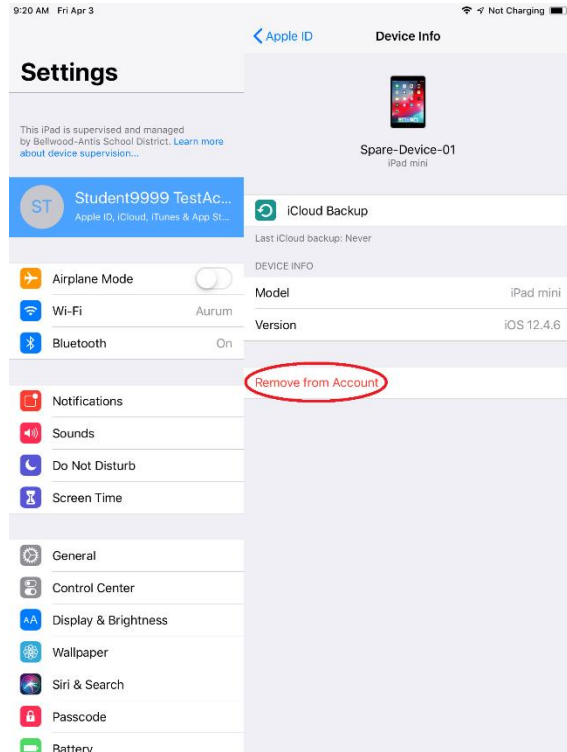
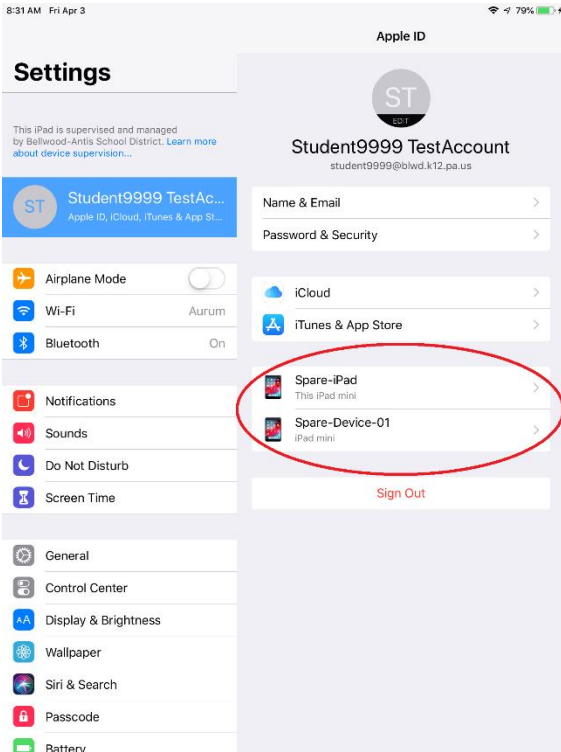
Decide if you want to keep any data on the device



***Use this method first if possible as it assures the Apple ID has been removed/signed out.**

***To remove your Apple ID from a different device:**

Navigate to Settings > Apple ID > Select the device > “Remove from Account” > Remove



*Use this method when the old device has been wiped/reassigned. If the device is not wiped your Apple ID could still be signed in and reappear. Continue to check if the removed device reappears and if it does ask a teacher to email basdtechhelp@blwd.k12.pa.us with a description of your problem.

iCloud Setup

Signing into iCloud allows files to sync to the currently signed in Apple ID via iCloud. This is useful for keeping personal files like photos for videos when backups are not possible in the event of device damage. If your device is low on storage, iCloud will keep full-resolution (original) photos in iCloud and automatically optimize your iPad storage by replacing smaller device-size versions to allow some storage gain.

Navigate to Settings > Apple ID >iCloud>iCloud Backup

